



GMT MONTHLY MEMBERSHIP PROGRESS REPORT

Results as of: 2/29/2024

Multiple District 31

LOCATION: NORTH CAROLINA

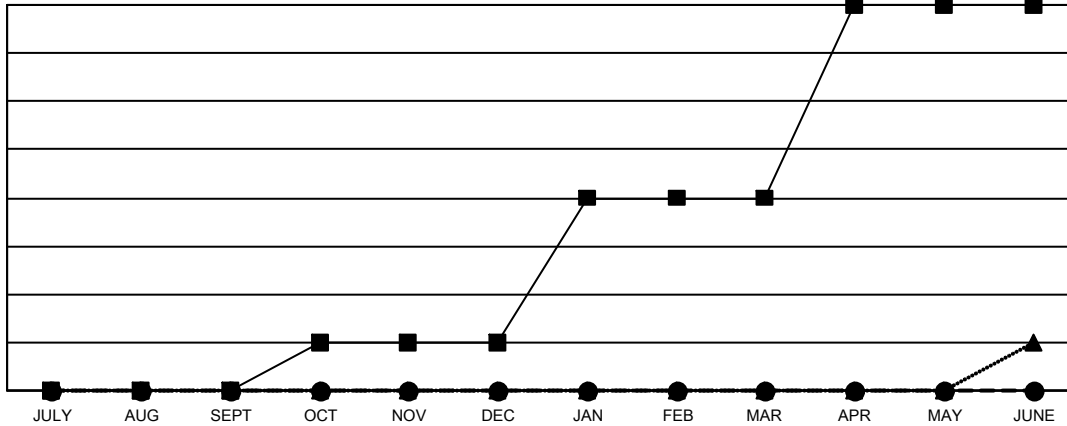
GMT: OPEN

GMT CA 1

Clubs			
RESULTS FOR 2023-2024			
QUARTER	NEW CLUB GOAL	NEW CLUBS	DROPPED CLUBS
JULY/AUG/SEPT	0	0	2
OCT/NOV/DEC	1	0	4
JAN/FEB/MAR	3	0	0
APR/MAY/JUNE	4	0	0

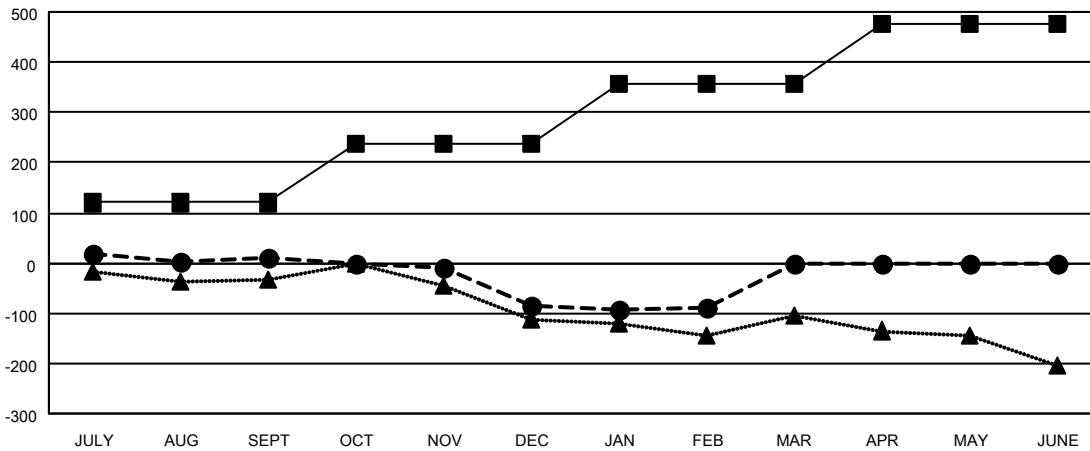
Members			
RESULTS FOR 2023-2024			
QUARTER	MEMBER GROWTH NET GOAL	MEMBER GROWTH ACTUAL	DROPPED MEMBERS ACTUAL (including transfers)
JULY/AUG/SEPT	120	155	115
OCT/NOV/DEC	116	98	179
JAN/FEB/MAR	120	108	93
APR/MAY/JUNE	121	0	0

GOALS AND ACTUAL NEW CLUBS CUMULATIVE



- - CURRENT YEAR GOALS FOR NEW CLUBS
- - CURRENT YEAR ACTUAL NEW CLUBS
- ▲ - LAST YEAR ACTUAL NEW CLUBS

GOALS AND ACTUAL MEMBERS CUMULATIVE



- - MEMBER GROWTH NET GOAL
- - MEMBER GROWTH ACTUAL
- ▲ - LAST YEAR MEMBERSHIP ACTUAL

DROPPED CLUBS: 6	107 CLUBS OF 246 ADDED 1 OR MORE NEW MEMBERS	GENDER DISTRIBUTION
		MALE 2,906 (64.68%)
		FEMALE 1,587 (35.32%)
DROPPED MEMBERS	CLICK HERE FOR CUMULATIVE MEMBERSHIP DATA	TOTAL FAMILY UNIT MEMBERS 1,026
DECEASED 63		FAMILY MEMBERS PAYING HALF DUES 527
CLUB CANCELLED 41		
OTHER 283		
TOTAL 387		